

DocuCentre-IV
C2265
C2263



DocuCentre-IV C2265 / C2263

Digital Colour Multifunction Device

Beautiful colour, great results.



Efficiently powerful performance

Fuji Xerox understands that you need efficient, reliable technology to get more done. And it needs to work effortlessly without wasting resources such as energy and paper.

Seamlessly create and share business-critical information, in full office colour, and take your business or workgroup to a higher level of performance — without hurting the bottom line.


The DocuCentre-IV C2265/C2263 multifunction devices are compact in size to suit offices with limited floor space while offering optimal performance features.



DocuCentre-IV C2263 with four 500-sheet paper trays and optional Finisher-B1

The multifunction device that grows with you

To meet the growing needs of your business, the DocuCentre-IV C2265/C2263 is specifically designed for scalability. As your business expands and printing requirements become more sophisticated, you can easily add functionality and productivity enhancing options.



Seamlessly create and share business-critical information, in full office colour, and take your business or workgroup to a higher level of performance.



1

Stand



2

Optional integrated
stapler finisher



3

Four 500-sheet paper trays
adjustable up to A3

4

Choose basic features like staple and
hole punch (optional), or advanced
capabilities to produce saddle-stitched
booklets (unfolded)

Streamline your processes

Dramatically increase your workflow efficiency. Cutting edge scanning functionality opens the door to better ways of getting work done. Scan to Email quickly distributes documents to multiple email addresses. Store files on the device, or in a personal directory. You can also scan documents to network folders, FTP sites and fax servers right from the device.

Scan to Folder feature allows you to scan to a folder on the printer's hard drive to reprint on demand or retrieve via a web browser. Documents stored on the hard drive are displayed as thumbnails and up-close previews on the device's touchscreen.

Easy archiving, organising and searching. With scan to searchable PDF¹, you can create a fully text-searchable file and integrate it into your workflow process in one easy step.

Significantly smaller scan files. The latest scan-export compression technologies² reduce traffic on the network and accelerate document delivery.

¹ The optional Searchable PDF kit is required.

² The optional High Compression Image Kit is required.

Walk-up simplicity. Print from and scan to any USB memory device for faster document delivery when you're not at your computer³.

³ The optional USB Memory Kit is required.



To speed up copying and faxing an express (simple) copy and fax feature displaying only the basic settings is available. This is provided in addition to the normal features.

Easy on the environment

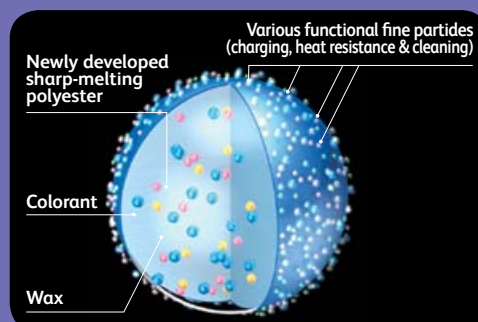
The unique "air flow design" reduces the number of cooling fans needed to maintain optimum operating temperatures. This saves energy and cuts noise levels to just 15 dB(A) during standby. The noise level during operation is only 47 dB(A). Even when situated right next to your desk, you won't be disturbed by this incredibly quiet device.

Smart Energy Management Technology. Our innovative Smart Energy Management Technology reduces energy usage by only activating the functions required by the user. What's more, you will enjoy a much quieter office environment.

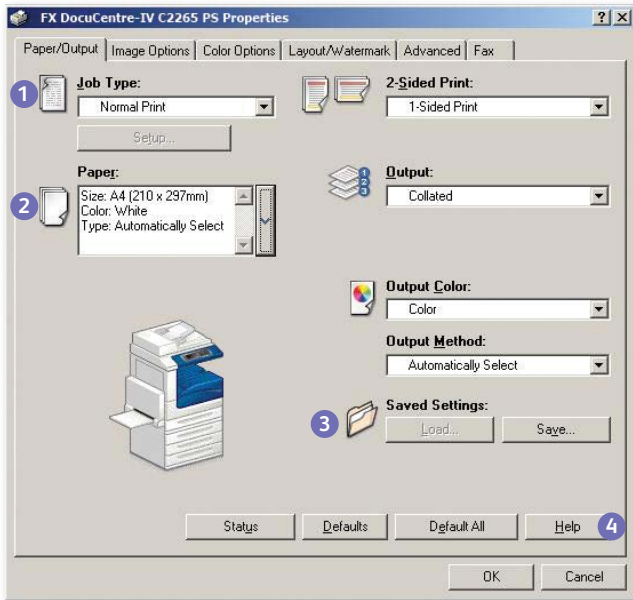
Three second start up time – no need to wait! When the DocuCentre-IV C2265/C2263 multifunction device recovers from sleep mode, it takes only three seconds to start working. Even if the device is routinely set to sleep mode to reduce power use, users don't experience any delays in set-up and operation.

Reduce environmental impacts from use of biomass plastic. Fuji Xerox has been actively promoting research and development to replace plastic parts with more environmentally friendly materials. One example is the use of biomass plastics, comprising more than 61 % of a plant-derived constituent (corn) in some device parts.

EA-Eco Toner. The Emulsion Aggregation (EA) Ultra Low-Melt toner achieves a fusing temperature more than 20°C lower than conventional toners, reducing power required during fusion, as well as achieving a brilliant glossy output even on ordinary paper.



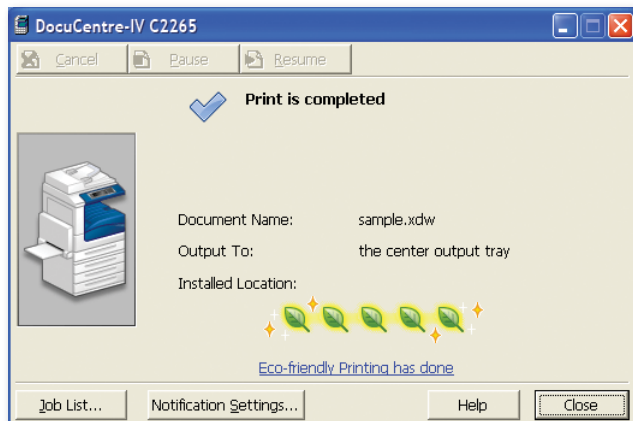
WHQL certified PCL and PostScript print drivers provide a consistent, easy-to-use interface for end users that can greatly simplify your printing operations.



- 1 Drop down menu for secure print, fax, save to mailbox and more
- 2 Paper selection summary window
- 3 Favourite print settings
- 4 Help function for feature descriptions and driver assistance

A truly universal print driver. Xerox Global Print Driver[®] lets IT administrators install, upgrade and manage Fuji Xerox and non-Fuji Xerox devices from a single driver. It provides a consistent, easy-to-use interface for end users, reducing the number of support calls, and simplifying print services management.

Users can analyse the environmental impact of their print operations by checking the ecological rating display on the document monitor⁴. This function displays up to five leaves to indicate how environmentally friendly the print settings are.



⁴ The document monitor is software that is installed on the computer. It can be downloaded from the Fuji Xerox website.

Customise your print driver settings for economy and efficiency. For example, set two-sided printing or choose N-up for printing multiple pages on a single sheet as your default.

Save time by storing the settings of frequently printed documents as favourites in your print driver. Settings include paper sizes, covers, duplexing, finishing and more.

Mac OS X now supported as standard. By installing the included non-PostScript printer driver, Mac OS X⁵ can be supported by the device, so that users can output office documents from Macintosh computers.

⁵ Some functions such as image quality adjustment are restricted. The Adobe[®] PostScript[®] 3™ Kit is required for full access of the printing functions.

Mac OS X 10.5/10.6/10.7 is supported.

Envelope printing is now easier than ever when sending documents such as notices and invoices. Simply select the “envelope type” function and enter the required settings, such as size, correct paper tray selection, and image rotation. Envelopes can be loaded in the bypass tray, and the envelope type selected in the paper size settings.

Forwarding received fax documents. When faxes are received they can be stored in the device folders, and any required documents can be printed after checking thumbnail previews. This cuts waste and reduces paper use. Documents received in a folder can also be forwarded by fax, printed, and sent via e-mail, FTP, or SMB.

Faxes can be sent directly from PCs. This reduces the volume of paper required in an office and eliminates the need for unnecessarily printing faxes.

Eliminating spam faxes. If you do not want to receive faxes from specific or unlisted numbers they can be rejected. This handy function lets you eliminate indiscriminate direct mailing and wasteful printing of unwanted faxes.

IP faxing or FoIP offers a more cost efficient way of doing business. Faxes are sent and received through an IP-based network such as the internet. Faxes can be routed directly to an email account to conserve energy and paper.

Reporting and management tools

CentreWare™ Internet Services software makes it easy for administrators to configure the device, upload address books, monitor usage and consumables remotely and establish auditing capabilities.



Using colour access controls to maximise value. Control costs by nominating when colour can be used, and by whom. This ensures that colour is available to those individuals who truly leverage its power, such as sales teams and the marketing department. Fuji Xerox provides ways to control colour costs while maximising the benefits of colour printing.

Driverless printing for remote users with CentreWare Internet Services web utility. Any connected computer can immediately output PDF, TIFF, JPEG and Docuworks files from any network computer, without using a print driver at all.

Device Configuration Tool allows for simplified device configuration and administration, and lets you easily clone configurations to other similar devices on the network.

Security at every level

Secure print helps prevent unauthorised viewers from seeing documents by holding jobs in the print queue until the user is authenticated.

Image overwrite security feature clears or “overwrites” all traces of any document image data remaining on the hard drive after a print, copy, scan or fax job (when enabled)⁶.

Hard disk encryption helps ensure that unauthorised users can't access stored documents.

IPv6 support facilitates full enablement of security features in line with the new IPSec standard.

Internal security provides an additional measure of security, providing IP filtering, domain filtering and port blocking.

Device authentication restricts access to copy, print, scan and fax features by validating user names and passwords before use. Audit Log capabilities let you know who sent what, and when.

⁶When a Solid State Drive is being used the residual data is only partially overwritten.



The power of mobility and convenience of cloud access

As computers, wireless technology and cell phones have evolved – so has the workforce. People no longer have to sit at their desks to work – they can now connect anywhere and at anytime.

Imagine printing without being physically connected to a corporate network, downloading drivers or worrying about your sensitive documents sitting on a printer tray. Now you can.

Mobile access anywhere, anytime

Mobile workers can conveniently print directly from their mobile device, such as an iPhone®, iPad® or Android-based smartphones by simply downloading the “Print Utility for iOS or Android” application from the App Store. Whether they’re travelling or working between offices, users will be able to print PDF documents, HTML emails and JPG image files.

Office workers on-the-go can now print anywhere using Google Cloud Print™

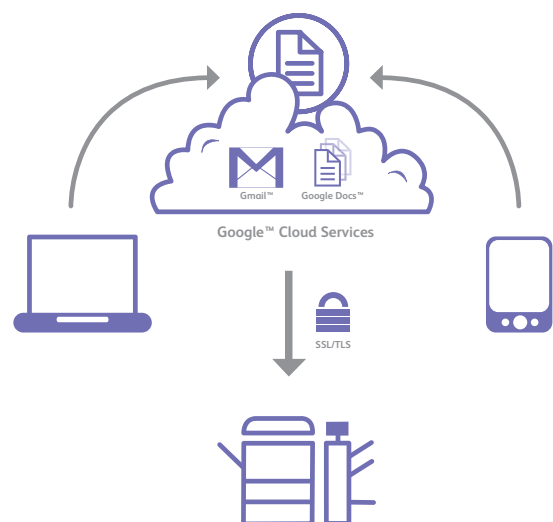
The DocuCentre-IV C2265/C2263 is designed to support Google Cloud Print™, which lets GMail™ and Google Docs™ users print from mobile devices like iPhone®, iPad®, or even a PC. Google Cloud Print™ lets you print documents over an Internet connection without downloading printer drivers.

Google Cloud Print™ is a new technology that connects the multifunction device to the web. Using Google Cloud Print™, you can make the MFD available to you and anyone you choose, from the applications being used every day.

Mobile workers: a powerful growth engine.

“IDC expects the global mobile worker population to increase from 919.4 million in 2008 to more than 1.2 billion in 2013, representing nearly 35 % of the worldwide workforce.”

Source: IDC, Worldwide Mobile Worker Population 2009-2013
Forecast, DOC # 221309, Dec 2009.



Specifications of DocuCentre-IV C2265 / C2263 Series

Copy Function

	DC-IV C2263	DC-IV C2265
Memory	2GB	
HDD	160 GB (Usable Space: 100 GB), Solid State Drive (SSD): 128 GB (Usable Space: 100 GB)	
Colour Capability	Full Colour	
Scanning Resolution	600 x 600 dpi	
Printing Resolution	600 x 600 dpi	
Warm-up Time	32 sec. when the main power is ON, 24 sec. or less (Room temperature 20°C)	
Original Paper Size	Max. 297 x 432 mm (A3, 11 x 17") for both sheet original and book original	
Output Paper Size	Max: A3 11x 17" (297x432mm) [For Bypass Tray, A3 11x 17" (297x432mm)] Min: A5 [For Bypass Tray, Postcard (100 x 148 mm), Envelope (120 x 235mm)] Image loss: Within 4 mm for lead edge, Within 2 mm for trail edge, Within 2 mm for rear / front side	
Output Paper Weight ¹	Tray: 60 - 256 gsm, Bypass Tray: 60 - 216 gsm	
First Copy Output Time	BW 6.5sec. (A4 LEF/Monochrome priority mode) Colour 8.1sec (A4 LEF/Colour priority mode)	
Continuous Copy Speed	20 ppm <BW> 20 ppm <Colour> A3: 11 ppm <BW> 11 ppm <Colour>	25 ppm <BW> 25 ppm <Colour> 14 ppm <BW> 14 ppm <Colour>
Paper Tray Capacity	Standard: 2,045 sheets: 500 sheets x 4 Tray + Bypass Tray 45 sheets (4T Model), 1,045 sheets: 500 sheets x 2 Tray + Bypass Tray 45 sheets (2T Model)	
Output Tray Capacity	Upper Center Tray: 250 sheets (A4 LEF) Lower Center Tray: 250 sheets (A4 LEF)	
Power Supply	AC 220 - 240 V, 8 A, 50/60 Hz	
Power Consumption	1.76kW In Sleep Mode: 2.3 W(220-240v), In Low Power Mode: 81 W or less, Ready Mode: 120 W or less	
Dimensions	4T / 2T Model: W 585 x D 640 x H 1,132 mm (With DADF)	
Machine weight	4T Model: 115 kg 2T Model: 107 kg	

¹ Performance may vary for heavyweight, coated and special stocks.

Print Function

	DC-IV C2263	DC-IV C2265
Print Resolution	Output Resolution: 600 x 600 dpi Data Process Resolution: Standard: 300x300dpi, High Resolution: 600x600dpi	
PDL	Standard: PCL6, PCL5, Optional: Adobe® PostScript® 3™	
Operating System	Standard: (PCL 6, PCL 5 Driver) Windows® 2000, Windows® XP, Windows Server® 2003, Windows Vista®, Windows Server® 2008 x86, Windows® 7, Windows® XP Professional x64 Edition, Windows Server® 2003 x64 Editions, Windows Vista® (x64), Windows Server® 2008 x64, Windows Server® 2008 R2 (x64), Windows® 7 (x64), Mac OS X 10.5/10.6/10.7 Adobe® PostScript® 3™(Optional) Windows® 2000, Windows® XP, Windows Server® 2003, Windows Vista®, Windows Server® 2008 (x86), Windows® 7, Windows® XP Professional (x64) Edition, Windows Server® 2003 (x64) Editions, Windows Vista® (x64), Windows Server® 2008 (x64), Windows Server® 2008 R2 (x64), Windows® 7 (x64), Mac OS 9.2.2, Mac OS X 10.3.9/10.4.0/10.4.1/10.4.2/10.4.3/10.4.4/10.4.5/10.4.6/10.4.8/10.4.9/10.4.10/10.4.11/10.5/10.6/10.7	

Scan Function

	DC-IV C2263	DC-IV C2265
Type	Colour Scanner	
Scanning Resolution	600 x 600 dpi, 400 x 400 dpi, 300 x 300 dpi, 200 x 200 dpi	
Scanning Speed	BW: 55 ipm, Colour: 55 ipm [Fuji Xerox Standard Document (A4 LEF), 200 dpi, Store to Folder]	
Connectivity	Standard: Ethernet 100BASE-TX / 10BASE-T	
Scan Destinations	Scan to Folder, Scan to PC/Server (using FTP/SMB protocol), Scan to Email and Scan to USB	

Fax Function (Optional)

	DC-IV C2263	DC-IV C2265
Send Document Size	Max: A3, 11 x 17", Long document (Max. 600 mm)	
Transmission Time	Less than 3 seconds	
Transmission Mode	ITU-T G3	
Applicable Lines	Telephone subscriber line, PBX, Fax communication (PSTN), Max. 3 ports (G3-3ports)	

Descriptions in this material, product specifications and / or appearances are subject to change without prior notice due to improvements. Please note that the product colour appears differently from the actual colour as a result of properties of papers or printing ink. Windows and Windows NT are registered trademarks of Microsoft Corporation. NetWare is a registered trademark of Novell, Inc. in the United States. Macintosh, Mac OS and Ether Talk are trademarks of Apple Computer, Inc. PostScript is a registered trademark of Adobe Systems Incorporated in each country. HP-GL is a registered trademark of Hewlett-Packard Company. Other company names or product names are registered trademarks or trademarks of each company.

Spares for the standard configuration of installed machines is supported for up to 7 years from the date of the end of machine production.

Internet Fax Function (Optional)

	DC-IV C2263	DC-IV C2265
Document Size	A3, B4, A4	
Scanning Resolution	Same as the fax function	
Output Format	Format: TIFF-FX, Compression Method: MH, MMR, JBIG	
Profile	TIFF-S, TIFF-F, TIFF-J	
Protocol	Outgoing Mail Server: SMTP, Incoming Mail Server: SMTP, POP3	
Connectivity	Standard: Ethernet 100BASE-TX/10BASE-T	

Duplex Automatic Document Feeder

	DC-IV C2263	DC-IV C2265
Original Paper Size	Max: A3, 11 x 17", Min: A5 38 - 128 gsm (In Duplex: 50 - 128 gsm)	
Capacity	110 sheets	
Feeding Speed (A4LEF Simplex)	BW: 20 ppm Colour: 20 ppm	BW: 25 ppm Colour: 25 ppm

Finisher-A1 (Optional)

	DC-IV C2263	DC-IV C2265
Type	Sorting (Offset available) / Stacking (Offset available)	
Paper Size / Paper Weight	Max: A3, 11 x 17", Min: Postcards (100 x 148 mm), 60 - 220 gsm	
Stacker Capacity	Finisher Tray [Without Stapling] A4: 500 Sheets, B4: 250 Sheets, A3 or larger: 200 Sheets, Mixed Size Stacking: 250 Sheets, [With Stapling] 30 Sets	
Staple	Capacity A4: 50 Sheets (Max 90 gsm), B4 or larger: 30 Sheets (Max 90 gsm)	
Paper Size	Max: A3, 11 x 17", Min: B5LEF	
Position	Single Stapling (Front / Angled)	
Dimensions / Weight	W 559 x D 448 x H 246 mm, 12 kg	

Finisher-B1 (Optional)

	DC-IV C2263	DC-IV C2265
Type	Sorting (Offset available) / Stacking (Offset available)	
Finisher Tray / Paper Weight	Max: A3, 11 x 17", Min: B5 LEF, 60 - 220 gsm	
Stacker Capacity	[Without Stapling] A4: 2000 Sheets, B4: 1000 Sheets, Mixed Size Stacking: 300 Sheets [With Stapling] A4: 100 Sets or 1,000 Sheets, B4 or larger: 75 Sets or 750 Sheets Booklet / Fold: 50 Sets or 600 Sheets, Fold: 500 Sheets	
Staple	Capacity 50 Sheets (Max 90 gsm)	
Paper Size	Max: A3, 11 x 17", Min: B5 LEF	
Position	Single stapling (Front / Angled, Rear / Straight), Dual stapling (Parallel to the edge)	
Punch	Paper Size A3, 11 x 17", B4, A4, A4 LEF, Letter(8.5 x 11"), Letter LEF(8.5 x 11"), B5 LEF Number of Holes 2 / 4 hole punch, 2 / 3 hole punch (US Specifications)	
Paper Weight	60 - 200 gsm	
Booklet Finishing ²	Capacity Booklet: 15 sheets, Fold: 5 sheets Paper Size Max: A3, 11 x 17", Min: A4, Letter (8.5 x 11") Paper Weight Saddle-Stapling: 64 - 80 gsm, Half-Folding: 64 - 105 gsm Dimensions / Weight W 657 x D 552 x H 1,017 mm, 28 kg, Booklet Finisher attached: W 657 x D 597 x H 1,087 mm, 37 kg	

² The optional Finisher B1 Booklet unit is required.

Side Tray

	DC-IV C2263	DC-IV C2265
Capacity	100 Sheets	
Dimensions / Weight	W 353 x D 469 x H 198 mm, 1 Kg	

Customer Expectation Document (CED)

For detailed product specifications, optimum performance parameters and service clearances refer to the Customer Expectation Document.



Reproduction Prohibitions Please note that reproduction of the following is prohibited by law: Domestic and overseas bank notes and coins, government-issued securities, national bonds and local bond certificates. Unused postage stamps and post cards. Certificate stamps stipulated by law. The reproduction of works for copyright purposes (literary works, musical works, paintings, engravings, maps, cinematographic works, photographic works, etc.) is prohibited except when they are reproduced personally, at home or within limited range according to the above. This product is equipped with an anti-counterfeit feature. This feature is not intended to prevent illegal reproduction. Be extremely careful about the management of equipment used.

For Your Safe Use
Before using the product, read the Instruction Manual carefully for proper use.
Use the product with an appropriate adequate power source and voltage displayed. Be sure to establish a ground.
In the case of a failure or short circuit, an electric shock may result.

For more information or detailed product specifications, call or visit us at
Fuji Xerox Australia 101 Waterloo Road,
Macquarie Park NSW 2113
Tel. (02) 9856 5000 Fax. (02) 9856 5003

13 14 12
<http://www.fujixerox.com.au>

