

DocuCentre-IV

C5575

C4475

C3375

C3373



# DocuCentre-IV C5575 / C4475 / C3375 / C3373

## Digital Colour Multifunction Device

Feature-packed to increase office efficiency



# Environmental benefits combined with high quality print performance

Fuji Xerox has enhanced its print processes through new technologies to continuously improve the performance of its new multifunction devices. At the same time we have made sure our devices are user friendly for improved productivity and efficiencies in operation.

**The multifunction device automatically detects the user.** Fuji Xerox has introduced its revolutionary “Smart WelcomEyes” technology\* to the DocuCentre-IV C5575 series multifunction devices. The device is able to detect when a user is approaching and automatically recovers from sleep mode, as if to welcome them. This clever technology eliminates unnecessary operational steps and the user can activate the device immediately.

\* Smart WelcomEyes is a trademark of Fuji Xerox.

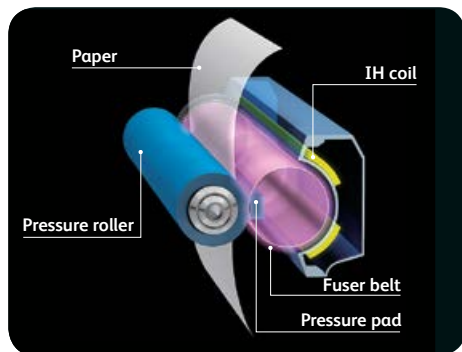
**Smart Energy Management Technology.** Our innovative Smart Energy Management Technology reduces energy usage by only activating the functions required by the user. What's more, you will enjoy a much quieter office environment.

**Two second start up time – no need to wait!** When the DocuCentre-IV C5575/C4475/C3375/C3373 multifunction device recovers from sleep mode, it takes only two seconds to start working. Even if the device is routinely set to sleep mode to reduce power use, users don't experience any delays in set-up and operation.

**Reduce environmental impacts from use of biomass plastic.** Fuji Xerox has been actively promoting research and development to replace plastic parts with more environmentally friendly materials. One example is the use of biomass plastics, comprising more than 61 % of a plant-derived constituent (corn) in some device parts.

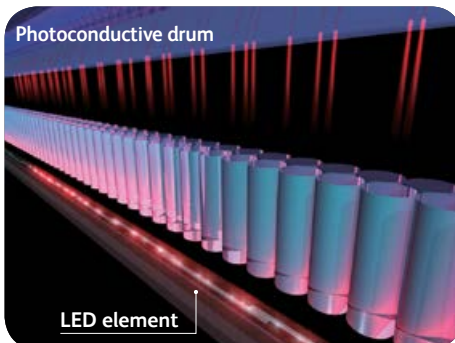


**Improved energy efficiency in fuser technology.** Induction Heating fusing technology eliminates the need for pre-heating the fusing unit and minimises power use when the machine is in standby mode..

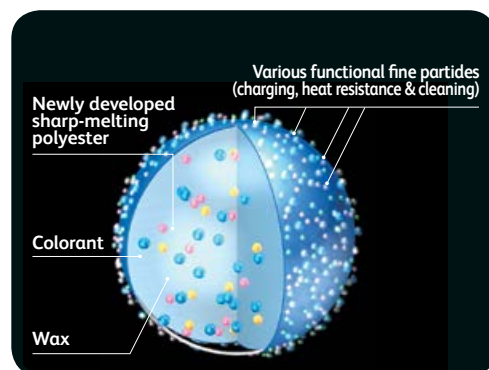


**High scanning speeds with less power use from our LED scanner.** Fuji Xerox has adopted LED technology, which requires less power than xenon lamps, as the light source. We have succeeded in achieving 1.5 times the brightness of a xenon lamp at one-third the power consumption while maintaining consistent scan image quality.

**High-precision LED print head technology for reduced power use.** Digitally Enhanced Lighting Control Imaging System (DELICIS) achieves an output print resolution of 1,200 x 2,400 dpi that is equivalent or even superior to that produced by a conventional laser raster output scanner (ROS) system. LED print head technology makes it possible to build smaller devices and improve energy efficiency.



**EA-Eco Toner.** The Emulsion Aggregation (EA) Ultra Low-Melt toner achieves a fusing temperature more than 20°C lower than conventional toners, reducing power required during fusion, as well as achieving a brilliant glossy output even on ordinary paper.



# Advanced functions, yet even easier to use

The DocuCentre-IV C5575/C4475/C3375/C3373 is the perfect device to be used as the “nerve centre” of your business. It works effortlessly as the central device in an office to provide stable, trouble-free productivity and excellent image quality business requirements.

**Dramatically increase your workflow efficiency.** Cutting edge scanning functionality opens the door to better ways of getting work done. Scan to Email quickly distributes documents to multiple email addresses. Store files on the device, or in a personal directory. You can also scan documents to network folders, FTP sites and fax servers right from the device.

**Scan to Folder** feature allows you to scan to a folder on the printer’s hard drive to reprint on demand or retrieve via a web browser. Documents stored on the hard drive are displayed as thumbnails and up-close previews on the device touchscreen.

**Easy archiving, organising and searching.** With scan to searchable PDF\*, you can create a fully text-searchable file and integrate it into your workflow process in one easy step.

**Significantly smaller scan files.** The latest scan-export compression technologies reduce traffic on the network and accelerate document delivery\*.

**Personalised user interface** allows you to configure the control panel to show only the features you regularly use, simply sign in to instantly configure the screen to your preferences. A fast, easy and productive way to work.

**Document conversion to Word/Excel® formats for easy editing.** The DocuCentre-IV C5575 series multifunction devices can detect text, tables and pictures in scanned images and convert them into Microsoft Word and Excel documents so you can edit them easily\*. Paper documents and original data that have been lost can be regained and easily used, saving time and hassle for users by eliminating rekeying chores.

\* The optional Advanced Scan Kit is required.



1  
Optional  
Wing Table

2  
Four 500-sheet paper trays  
adjustable up to A3



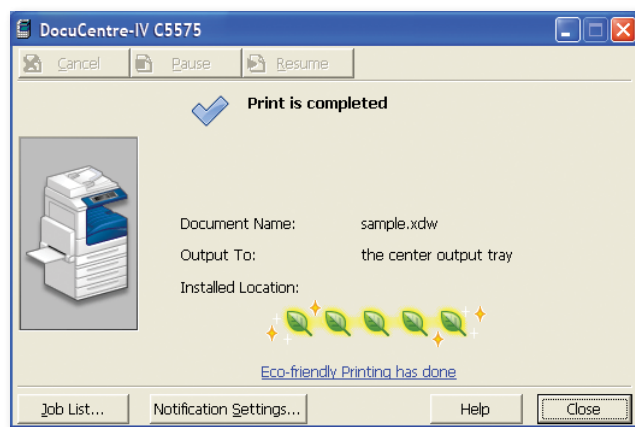
3  
Optional integrated  
stapler finisher

4  
Choose basic features like staple and hole punch, or advanced capabilities to produce saddle-stitched booklets (unfolded).\*

\*Optional accessories are required for hole punching and booklet capabilities.

**High resolution output – a genuine 2,400 dpi.** The DocuCentre-IV C5575/C4475/C3375/C3373 can produce high resolution output of 2,400 dpi. Users can tailor the final output settings of their documents by selecting “standard”, “photo”, “presentation”, “design”, “CAD” or “POP” to suit the image type they require, as well as setting the colour balance or choosing an ICC profile.

**Users can analyse the environmental impact of their print operations** by checking the ecological rating display on the document monitor\*. This function displays up to five leaves to indicate how environmentally friendly the print settings are.



\* The document monitor is software that is installed on the computer. It can be downloaded from the Fuji Xerox website.

**To speed up copying and faxing** an express (simple) copy and fax feature is available that displays only the basic settings. This is provided in addition to the normal features.

**Forwarding received fax documents.** When faxes are received they can be stored in the device folders, and any required documents can be printed after checking thumbnail previews. This cuts waste and reduces paper use. Documents received in a folder can also be forwarded by fax, printed, and sent via e-mail, FTP, or SMB.

**Faxes can be sent directly from PCs.** This reduces the volume of paper required in an office and eliminates the need for unnecessarily printing faxes.

**Eliminating spam faxes.** If you do not want to receive faxes from specific or unlisted numbers they can be rejected. This handy function lets you eliminate indiscriminate direct mailing and wasteful printing of unwanted faxes.

**IP Fax or FoIP** offers a more cost efficient way of doing business. Faxes are sent and received through an IP-based network such as the internet. Faxes can be routed directly to an email account to conserve energy and paper.



5

2,030-sheet A4 High Capacity Feeder (optional) can increase total capacity to 5,120 sheets

6

High Capacity Tandem Tray holds up to 3,000 sheets

7

This high performance finisher features automatic stapling, hole-punching, folding and booklet making.



# The power of mobility and convenience of cloud access

As computers, wireless technology and cell phones have evolved – so has the workforce. People no longer have to sit at their desks to work – they can now connect anywhere and at anytime.

Imagine printing without being physically connected to a corporate network, downloading drivers or worrying about your sensitive documents sitting on a printer tray. Now you can.

## Mobile access anywhere, anytime

Mobile workers can conveniently print directly from their mobile device, such as an iPhone®, iPad® or Android-based smartphones by simply downloading the “Print Utility for iOS or Android” application from the App Store. Whether they’re travelling or working between offices, users will be able to print PDF documents, HTML emails and JPG image files.

## Office workers on-the-go can now print anywhere using Google Cloud Print™

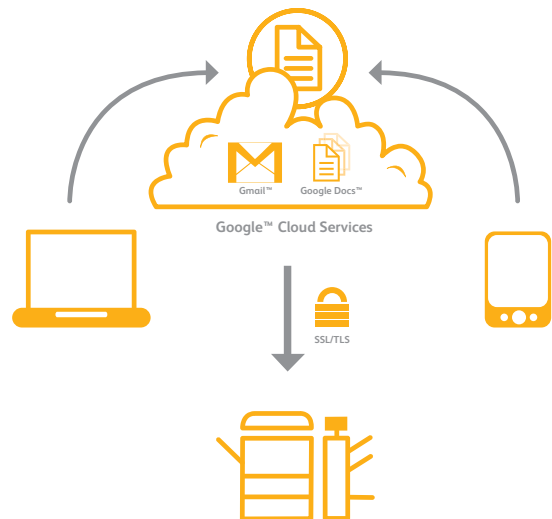
The DocuCentre-IV C5575 series is designed to support Google Cloud Print™, which lets Gmail™ and Google Docs™ users print from mobile devices like iPhone®, iPad®, or even a PC. Google Cloud Print™ lets you print documents over an Internet connection without downloading printer drivers.

Google Cloud Print™ is a new technology that connects the multifunction device to the web. Using Google Cloud Print™, you can make the MFD available to you and anyone you choose, from the applications being used every day.

## Mobile workers: a powerful growth engine.

“IDC expects the global mobile worker population to increase from 919.4 million in 2008 to more than 1.2 billion in 2013, representing nearly 35 % of the worldwide workforce.”

Source: IDC, Worldwide Mobile Worker Population 2009-2013  
Forecast, DOC # 221309, Dec 2009.



# Reporting and management tools

**CentreWare™ Internet Services** software makes it easy for administrators to configure the device, upload address books, monitor usage and consumables remotely and establish auditing capabilities.



**Manage colour printing to minimise costs.** Control costs by nominating when colour can be used, and by whom. This ensures that colour is available to those individuals who truly leverage its power, such as sales teams and the marketing department.

**Driverless printing for remote users** with CentreWare Internet Services web utility. Any connected computer can immediately output PDF, TIFF, JPEG and Docuworks files from any network computer, without using a print driver at all.

**Device Configuration Tool** allows for simplified device configuration and administration, and lets you easily clone configurations to other similar devices on the network.

## Security at every level

**Secure print** helps prevent unauthorised viewers from seeing documents by holding jobs in the print queue until the user is authenticated.

**Image overwrite** security feature clears or “overwrites” all traces of any document image data remaining on the hard drive after a print, copy, scan or fax job (when enabled).

**Hard disk encryption** helps ensure that unauthorised users can't access stored documents.

**IPv6 support** includes full enablement of the new IPSec standard.

**Internal security** provides an additional measure of security, providing IP filtering, domain filtering and port blocking.

**Device authentication** restricts access to copy, print, scan and fax features by validating user names and passwords before use. Audit Log capabilities let you know who sent what, and when.



Specifications of DocuCentre-IV C5575 / C4475 / C3375 / C3373 Series

Copy Function

	DC-IV C5575	DC-IV C4475	DC-IV C3375	DC-IV C3373
Memory	2GB			
HDD	160 GB (Usable Space: 128 GB)			
Colour Capability	Full Colour			
Scanning Resolution	600 x 600 dpi			
Printing Resolution	1,200 x 2,400 dpi (Multi-value-photo), 600 x 600 dpi (Text / Text-Photo / Photo / Map)			
Warm-up Time	28 sec or less (at room temperature 20°C)			
	24 sec or less when the main power is on (at room temperature 20°C)			
Original Paper Size	Max. 297 x 432 mm (A3, 11 x 17") for both sheet original and book original			
Output Paper Size	Max: SRA3 (320 x 450mm) 126 x 177.7" (320 x 449.6 mm), 12 x 18" (304.8 x 457.2 mm) [For Bypass Tray, Max: 320.0 x 482.6 mm] Min: A5 [For Bypass Tray, Postcard (100 x 148 mm), Envelope (120 x 235 mm)] Image loss: Within 4 mm for lead edge, Within 2 mm for trail edge, Within 2 mm for left / right side Tray: 60 - 256 gsm, Bypass Tray: 55 - 280 gsm			
Output Paper Weight <sup>1</sup>	3.7 sec <BW> 5.2 sec <Colour>	4.4 sec <BW> 5.7 sec <Colour>	4.9 sec <BW> 6.4 sec <Colour>	4.9 sec <BW> 6.4 sec <Colour>
First Copy Output Time	6.6 sec <BW> 8.7 sec <Colour>	7.7 sec <BW> 9.8 sec <Colour>	8.2 sec <BW> 10.3 sec <Colour>	8.7 sec <BW> 10.8 sec <Colour>
Continuous Copy Speed	55 ppm <BW> 50 ppm <Colour> A3: 27 ppm <BW> 25 ppm <Colour>	45 ppm <BW> 45 ppm <Colour>	35 ppm <BW> 35 ppm <Colour>	30 ppm <BW> 30 ppm <Colour> 25 ppm <BW> 25 ppm <Colour>
Paper Tray Capacity	Standard: 2,090 sheets: 500 sheets x 4 Tray + Bypass 90 sheets Optional: HCF B1: 2,030 sheets Tandem Tray Module: 2,500 sheets (Available only for English MFD) Max: 5,120 sheets: 500 sheets + Tandem Tray 2,500 sheets (500 + 867 + 1,133 sheets) + HCF B1 2,030 sheets + Bypass 90 sheets 4,120 sheets: 500 sheets x 4 Tray + HCF B1 2,030 sheets + Bypass 90 sheets Exit 2 Tray: 250 sheets (A4 LEF), Lower Center Tray: 250 sheets (A4 LEF)			
Output Tray Capacity	AC 220 - 240 V, 8 A, 50/60 Hz			
Power Supply	Max: 2.4 kW, Standby: 60 W, Low Power Mode: 42 W, Sleep Mode: 2.2 W			
Power Consumption	From W 640 x D 685 x H 1,128 mm, From 133 kg			
Dimensions / Weight	From W 640 x D 685 x H 1,128 mm, From 133 kg			

<sup>1</sup> Performance may vary for heavyweight, coated and special stocks.

Print Function

	DC-IV C5575	DC-IV C4475	DC-IV C3375	DC-IV C3373
Print Resolution	Output Resolution: 1,200 x 2,400 dpi, 1,200 x 1,200 dpi Data Process Resolution: Standard: 600 x 600 dpi, High Resolution: 600 x 600 dpi, High Fine: 1,200 x 1,200 dpi			
PDL	Standard: PCL6, PCL5, Optional: Adobe® PostScript® 3™			
Operating System	Microsoft® Windows® 2000, Microsoft® Windows® XP, Microsoft® Windows Server® 2003, Microsoft® Windows Vista®, Microsoft® Windows Server® 2008, Microsoft® Windows® 7, Microsoft® Windows® XP x64, Microsoft® Windows Server® 2003x64, Microsoft® Windows Vista®x64, Microsoft® Windows Server® 2008x64, Microsoft® Windows Server® 2008 R2, Microsoft® Windows® 7 x64, Mac OS X 9.2.2, Mac OS X 10.3.9 ~ 10.4.6/10.4.8 ~ 10.4.11/10.5 ~ 10.7 Standard: Ethernet 100BASE-TX / 10BASE-T, USB2.0 Optional: Ethernet 1000BASE-T Bidirectional Parallel (IEEE1284 - B <sup>1</sup> )			
Connectivity				

Scan Function

	DC-IV C5575	DC-IV C4475	DC-IV C3375	DC-IV C3373
Type	Colour Scanner			
Scanning Resolution	600 x 600 dpi, 400 x 400 dpi, 300 x 300 dpi, 200 x 200 dpi			
Scanning Speed	BW: 70 ipm, Colour: 70 ipm (DADF) BW: 80 ipm, Colour: 80 ipm (Single Pass DADF, Simplex) BW: 140 ipm, Colour: 140 ipm (Single Pass DADF, Duplex)			
Connectivity	Standard: Ethernet 100BASE-TX / 10BASE-T Optional: Ethernet 1000 BASE-T			

Fax Function (Optional)

	DC-IV C5575	DC-IV C4475	DC-IV C3375	DC-IV C3373
Send Document Size	Max: A3, 11 x 17", Long document (Max. 600 mm)			
Transmission Time	Less than 3 seconds			
Transmission Mode	G3			
Applicable Lines	Telephone Subscriber Line PBX, PSTN, Max. 3 ports			

Duplex Automatic Document Feeder<sup>2</sup>

	DC-IV C3375	DC-IV C3373
Original Paper Size	Max: A3, 11 x 17", Min: A5 38 - 128 gsm (In Duplex: 50 - 128 gsm)	
Capacity	110 sheets	
Feeding Speed (A4/LEF)	BW: 35 DPM BW: 35 DPM BW: 35 DPM Colour: 35 DPM Colour: 35 DPM Colour: 35 DPM	

<sup>2</sup> Available on AP-IV C3375/C3373 models only.

Descriptions in this material, product specifications and / or appearances are subject to change without prior notice due to improvements. Please note that the product colour appears differently from the actual colour as a result of properties of papers or printing ink. Windows and Windows NT are registered trademarks of Microsoft Corporation. NetWare is a registered trademark of Novell, Inc. in the United States. Macintosh, Mac OS and Ether Talk are trademarks of Apple Computer, Inc. PostScript is a registered trademark of Adobe Systems Incorporated in each country. HP-GL is a registered trademark of Hewlett-Packard Company. Other company names or product names are registered trademarks or trademarks of each company.

Spares for the standard configuration of installed machines is supported for up to 7 years from the date of the end of machine production.

For more information or detailed product specifications, call or visit us at

**Fuji Xerox Australia** 101 Waterloo Road,  
Macquarie Park NSW 2113  
Tel. (02) 9856 5000 Fax. (02) 9856 5003

13 14 12

<http://www.fujixerox.com.au>

Duplex Automatic Document Feeder<sup>3</sup>

	DC-IV C5575	DC-IV C4475
Type	Single Pass Duplex Automatic Document Feeder	
Original Paper Size	Max: A3, 11 x 17", Min: A5 38 - 128 gsm (In Duplex: 50 - 128 gsm)	
Capacity	130 sheets	
Feeding Speed (A4/LEF)	BW: 55 DPM BW: 45 DPM BW: 35 DPM BW: 35 DPM BW: 35 DPM Colour: 50 DPM Colour: 45 DPM Colour: 35 DPM Colour: 35 DPM Colour: 35 DPM	
Dimensions / Weight	W 560 x D 498 x H 140 mm, 11 kg	

<sup>3</sup> Standard for AP-IV C5575/C4475 models only.

Finisher-A1 (Optional)<sup>4</sup>

	DC-IV C5575	DC-IV C4475	DC-IV C3375	DC-IV C3373
Type	Sorting (Offset available) / Stacking (Offset available)			
Paper Size / Paper Weight	Max: A3, 11 x 17", Min: Postcards (100 x 148 mm), 55 - 220 g/m <sup>2</sup>			
Stacker Capacity	Finisher Tray			
Finisher Tray	[Without Staples] A4: 500 Sheets, B4: 250 Sheets, A3 or larger: 200 Sheets, Mixed Size Stacking: 250 Sheets, [With Staples] 30 Sets			
Staple	Capacity			
Capacity	A4: 50 Sheets (Max 90 gsm), B4 or larger: 30 Sheets (Max 90 gsm)			
Size	Max: A3, 11 x 17", Min: B5LEF			
Position	Single (Front / Angled Staple)			

<sup>4</sup> The Optional Finisher-A1 cannot be installed on DocuCentre-IV C5575/C4475.

Finisher-B1 (Optional)

	DC-IV C5575	DC-IV C4475	DC-IV C3375	DC-IV C3373
Type	Finisher Tray			
Finisher Tray	Sorting (Offset available) / Stacking (Offset available)			
Paper Size / Paper Weight	Max: A3, 11 x 17", Min: B5, 55 - 220 gsm			
Stacker Capacity	[Without Staple] A4: 2000 Sheets, B4: 1,000 Sheets, Mixed Size Stacking: 300 Sheets [With Staples] A4: 100 Sets or 1,000 Sheets, B4 or larger: 75 Sets or 750 Sheets Booklet / Fold <sup>1</sup> : 50 Sets or 600 Sheets, Fold <sup>1</sup> : 500 Sheets			

Staple	
Capacity	50 Sheets (Max 90 gsm)
Paper Size	Max: A3, 11 x 17", Min: B5LEF
Position	Single (Front / Angled, Back / Straight), Dual (Parallel)
Punch <sup>1</sup>	
Paper Size	A3, 11 x 17", B4, A4, A4 LEF, Letter 8.5 x 11", Letter 8.5 x 11" LEF, B5 LEF
Number of Holes	2 Holes / 4 Holes, or US 2 / 3 Holes
Paper Weight	55 - 200 gsm
Booklet Finishing <sup>4</sup>	
Capacity	Booklet: 15 sheets, Fold: 5 sheets
Paper Size	Max: A3, 11 x 17", Min: A4, Letter (8.5 x 11")
Paper Weight	Saddle-Stapling: 64 - 80 gsm, Half-Folding: 64 - 105 gsm
Dimensions / Weight	W 620 x D 552 x H 987 mm, 28 kg (w/o Booklet Finisher) W 575 x D 597 x H 1057 mm, 37 kg (w/ Booklet Finisher)

<sup>1</sup> The optional Hole Punch kit is required

<sup>4</sup> The optional Finisher B1 Booklet unit is required.

Booklet Finisher-C1 (Optional)

	DC-IV C5575	DC-IV C4475	DC-IV C3375	DC-IV C3373
Staple				
Capacity	50 Sheets (Max 90 gsm)			
Paper Size	Max: A3, 11 x 17", Min: B5			
Position	Single (Front / Back / Angled), Dual (Parallel)			
Punch				
Paper Size	A3, 11 x 17", B4, A4, A4 LEF, Letter (8.5 x 11"), Letter (8.5 x 11") LEF, B5LEF			
Number of Holes	2 / 4 holes (Option US 2 / 3 holes)			
Paper Weight	55 - 200 gsm			
Booklet Finishing				
Capacity	Saddle-Stapling: 15 Sheets, Half-Folding: 5 Sheets, Bi-Fold: 1 Sheet			
Paper Size	Max: SRA3 (320 x 450 mm), 12 x 18" (304.8 x 457.2 mm), Min: A4, Letter (8.5 x 11")			
Paper Weight	Saddle-Stapling: 64 - 90 gsm, Half-Folding: 64 - 105 gsm, Bi-Fold: 64 - 220gsm			

High Capacity Feeder (Optional)

	DC-IV C5575	DC-IV C4475	DC-IV C3375	DC-IV C3373
Paper Size	A4 LEF, 8.5 x 11" LEF, B5 LEF			
Paper Weight	55 - 216 gsm			
Capacity	2,030 sheets (80 gsm)			

Customer Expectation Document (CED)

For detailed product specifications, optimum performance parameters and service clearances refer to the Customer Expectation Document.



**Reproduction Prohibitions** Please note that reproduction of the following is prohibited by law:  
Domestic and overseas bank notes and coins, government-issued securities, national bonds and local bond certificates.  
Unused postage stamps and post cards. Certificate stamps stipulated by law. The reproduction of works for copyright purposes (literary works, musical works, paintings, engravings, maps, cinematographic works, photographic works, etc.) is prohibited except when they are reproduced personally, at home or within limited range according to the above. This product is equipped with an anti-counterfeit feature. This feature is not intended to prevent illegal reproduction. Be extremely careful about the management of equipment used.



For Your Safe Use

Before using the product, read the Instruction Manual carefully for proper use.  
Use the product with an appropriate adequate power source and voltage displayed. Be sure to establish a ground.  
In the case of a failure or short circuit, an electric shock may result.

